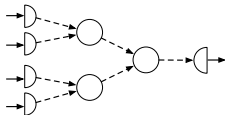


# Raphtory: A new tool for large temporal networks applied to the far right social network Gab



**Presenter:** Imane Hafnaoui,

**Project team (alphabetical order):**

Naomi Arnold, Richard G. Clegg, Félix Cuadrado, Raul Mondragon, Hugo Parada, Ben Steer

## Aims of this talk (unordered list)

Aim A: Give insight into data

What drives the evolution of the alt-right social network gab?

## Aims of this talk (unordered list)

### Aim A: Give insight into data

What drives the evolution of the alt-right social network gab?

### Aim 1: Show a technique

Temporal analysis and in particular “windowing” is an invaluable tool for social network analysis.

## Aims of this talk (unordered list)

### Aim A: Give insight into data

What drives the evolution of the alt-right social network gab?

### Aim 1: Show a technique

Temporal analysis and in particular “windowing” is an invaluable tool for social network analysis.

### Aim $\alpha$ : Sell you a tool

Raphorty is an open-source, big-data platform developed at QMUL. It is unique in its ability to perform flexible temporal analysis on batch or streamed graph data.

# The gab platform (and why we care)

- 95GB raw data (19 million posts) from gab platform (**medium** data).
  - Data is user, posts (threaded), timestamps and other metadata.
  - NB our research on **structure** not **content**.
- First eighteen months of data available.
  - September 2016 – May 2018.
- Largely complete data from this period.
  - “free speech” focus means “everything” is public.
- Alt-right focus:
  - Racism, fake news, hate speech, radicalisation.

# The gab platform (and why we care)

- 95GB raw data (19 million posts, 200 million comments, 20 million images, 20 million videos, 20 million audio files, 20 million data).
  - Data is user, posts (threaded), comments, images, videos, audio files, data.
  - NB our research on content moderation is ongoing.
- First eighteen months of data (Jan 2019 - Jan 2020)
  - See **BBC Trending** for a list of trending topics during this period.
- **Gab: Free speech haven or alt-right safe space?**
  - Focus means "everything" is public.
  - Focus:
    - Racism, fake news, hate speech, radicalisation.

# The gab platform (and why we care)

- 95% of posts (19 million posts) are from the United States (data).
- NBC News: "Gab, the social media platform favored by the alleged Pittsburgh shooter, explained" (data).
- First eighteen
- BBC Trending: "Free speech haven or focus means" (data).
- Vox: "Racism, fake news, hate speech, radical..." (data).

# The gab platform (and why we care)

- 95GB of data (19 million posts (threaded))
  - NB: First eighteen
  - Scanned by the BBC Trendline
  - Gab: Free speech
  - RACISM, fake news, speech, radicalism
- Gab Is the Alt-Right's New Social Network Racists**
- Gab, the social media site alleged Pittsburgh shooter frequented, is being investigated by the FBI**
- On Gab, an Extremist-Friendly Site, Pittsburgh Shooting Suspect Aired His Hatred in Full**
- Scanned by the Vox**
-



# Temporal networks

Social network  $\rightarrow$  graph  $G$

We can form a graph from a social network by creating an edge between two users if they have a relationship, interact, etc.

# Temporal networks

Social network  $\rightarrow$  graph  $G$

We can form a graph from a social network by creating an edge between two users if they have a relationship, interact, etc.

Social network  $\rightarrow$  many graphs  $G(t, \tau)$

There is no such thing as “the twitter graph”. The graph varies hugely depending on the **time**  $t$  and **timescale**  $\tau$ .

# Temporal networks

Social network  $\rightarrow$  graph  $G$

We can form a graph from a social network by creating an edge between two users if they have a relationship, interact, etc.

Social network  $\rightarrow$  many graphs  $G(t, \tau)$

There is no such thing as “the twitter graph”. The graph varies hugely depending on the **time**  $t$  and **timescale**  $\tau$ .



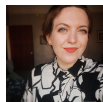
Imane Hafnaoui



Exploring Gab with Raptory



Coseners 2020



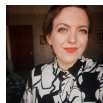
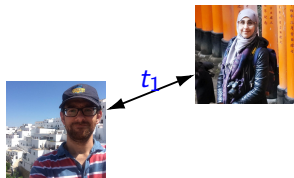
# Temporal networks

Social network  $\rightarrow$  graph  $G$

We can form a graph from a social network by creating an edge between two users if they have a relationship, interact, etc.

Social network  $\rightarrow$  many graphs  $G(t, \tau)$

There is no such thing as “the twitter graph”. The graph varies hugely depending on the **time**  $t$  and **timescale**  $\tau$ .



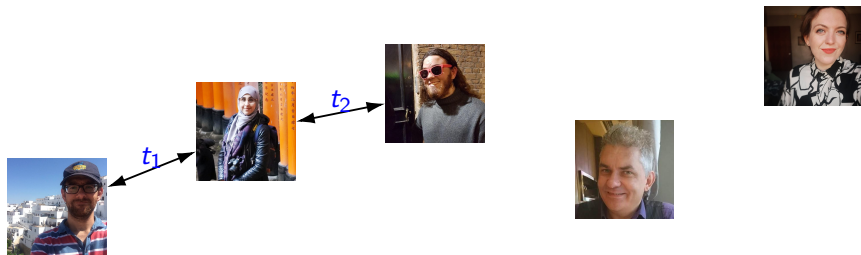
# Temporal networks

Social network  $\rightarrow$  graph  $G$

We can form a graph from a social network by creating an edge between two users if they have a relationship, interact, etc.

Social network  $\rightarrow$  many graphs  $G(t, \tau)$

There is no such thing as “the twitter graph”. The graph varies hugely depending on the **time**  $t$  and **timescale**  $\tau$ .



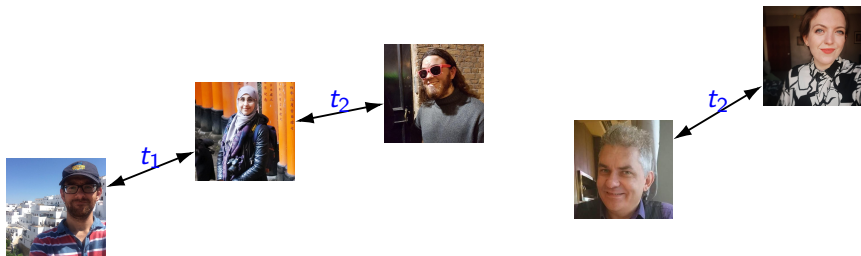
# Temporal networks

Social network  $\rightarrow$  graph  $G$

We can form a graph from a social network by creating an edge between two users if they have a relationship, interact, etc.

Social network  $\rightarrow$  many graphs  $G(t, \tau)$

There is no such thing as “the twitter graph”. The graph varies hugely depending on the **time**  $t$  and **timescale**  $\tau$ .



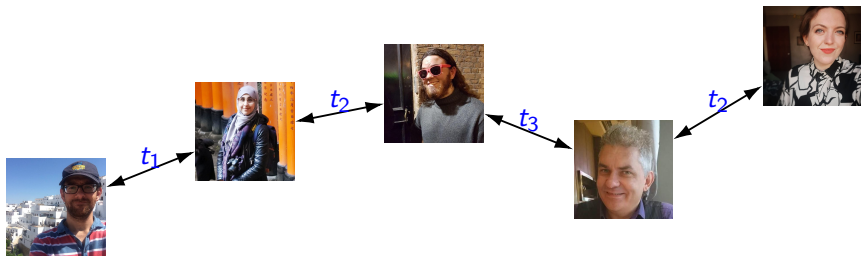
# Temporal networks

Social network  $\rightarrow$  graph  $G$

We can form a graph from a social network by creating an edge between two users if they have a relationship, interact, etc.

Social network  $\rightarrow$  many graphs  $G(t, \tau)$

There is no such thing as “the twitter graph”. The graph varies hugely depending on the **time**  $t$  and **timescale**  $\tau$ .



# Temporal networks

Social network  $\rightarrow$  graph  $G$

We can form a graph from a social network by creating an edge between two users if they have a relationship, interact, etc.

Social network  $\rightarrow$  many graphs  $G(t, \tau)$

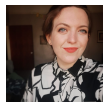
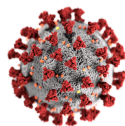
There is no such thing as “the twitter graph”. The graph varies hugely depending on the **time**  $t$  and **timescale**  $\tau$ .



Imane Hafnaoui



Exploring Gab with Raptory



Coseners 2020



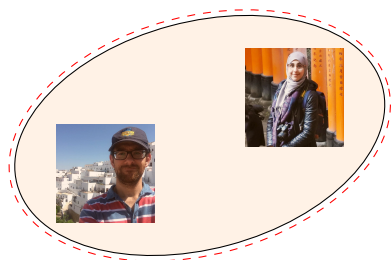
# Temporal networks

Social network  $\rightarrow$  graph  $G$

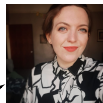
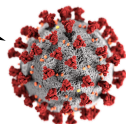
We can form a graph from a social network by creating an edge between two users if they have a relationship, interact, etc.

Social network  $\rightarrow$  many graphs  $G(t, \tau)$

There is no such thing as “the twitter graph”. The graph varies hugely depending on the **time**  $t$  and **timescale**  $\tau$ .



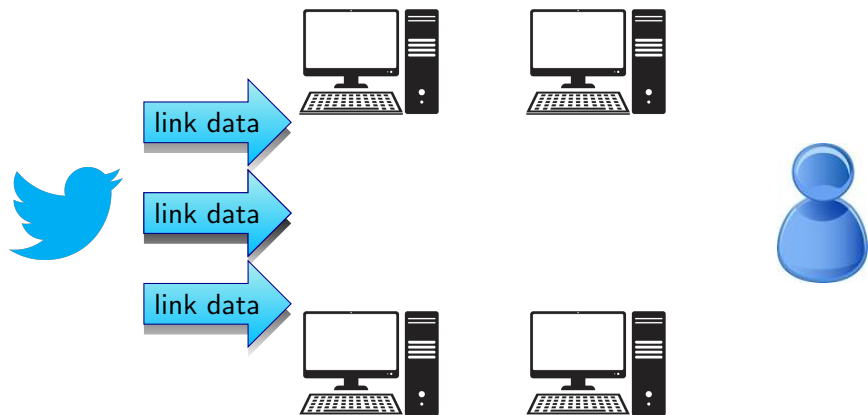
Imane Hafnaoui



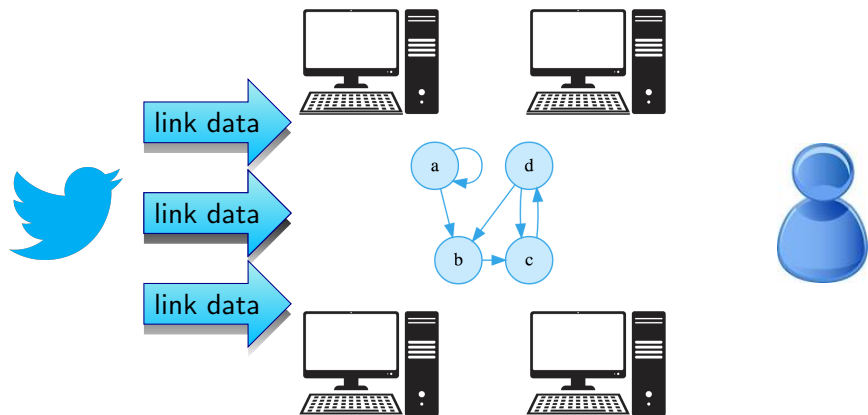
# The Rapyrtory tool



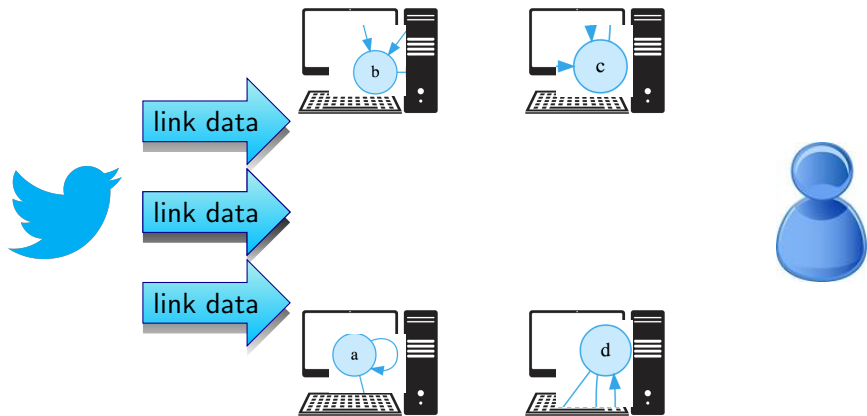
# The Rapyrtory tool



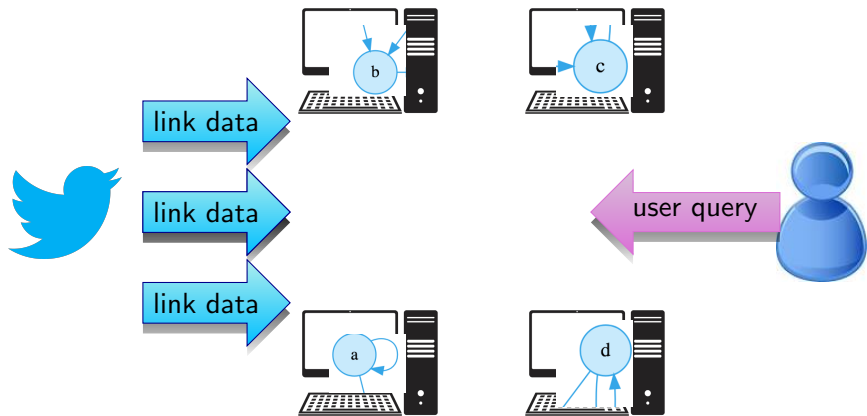
# The Rapyrtory tool



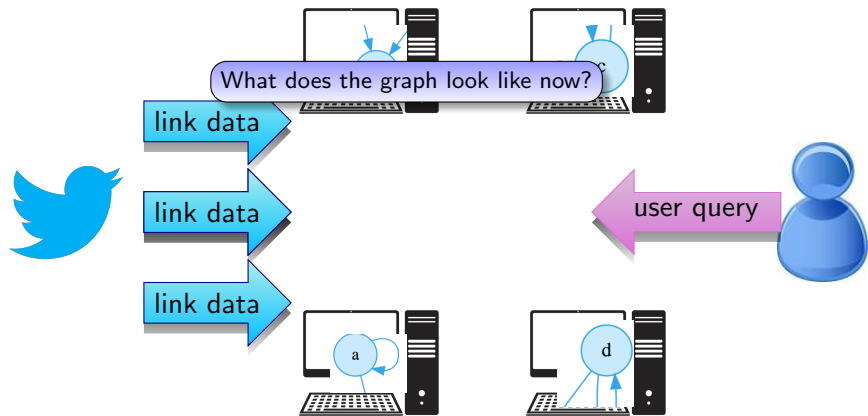
# The Rapyrtory tool



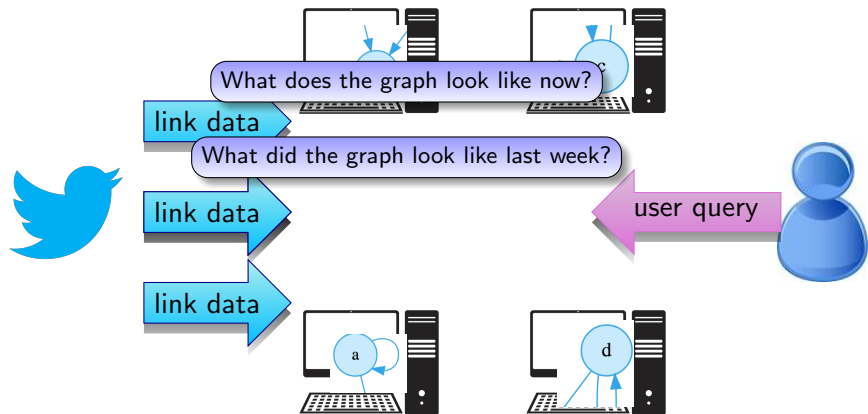
# The Rapyrtory tool



# The Raptory tool

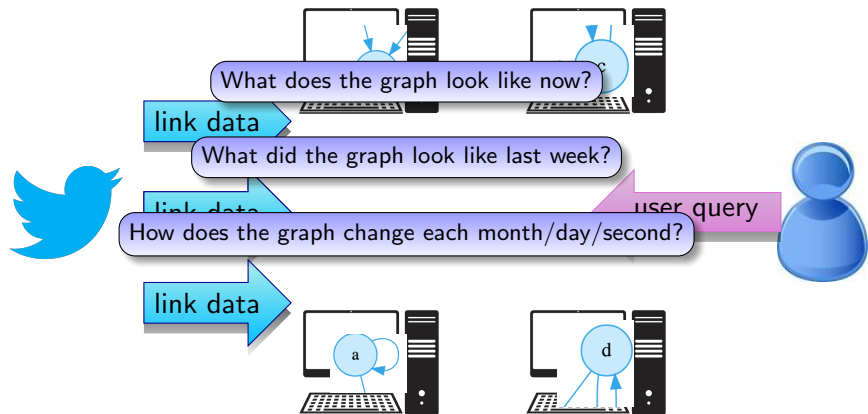


# The Raptory tool

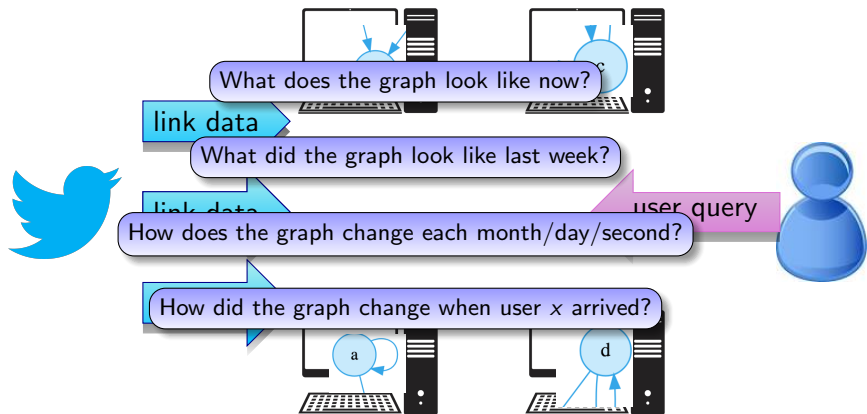




# The Raptory tool



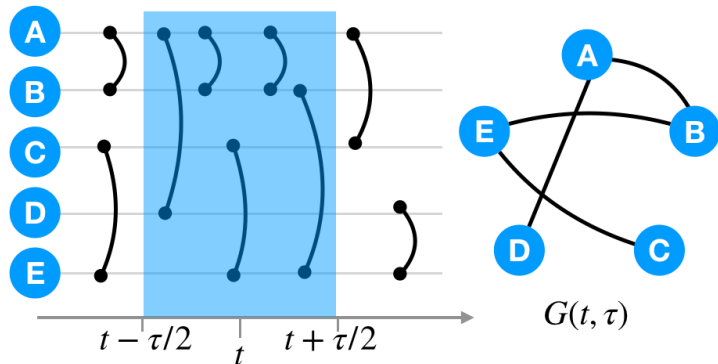
# The Raptory tool



# Temporal graphs – interaction graphs

## Interaction graph for time $t$ and a window length $\tau$

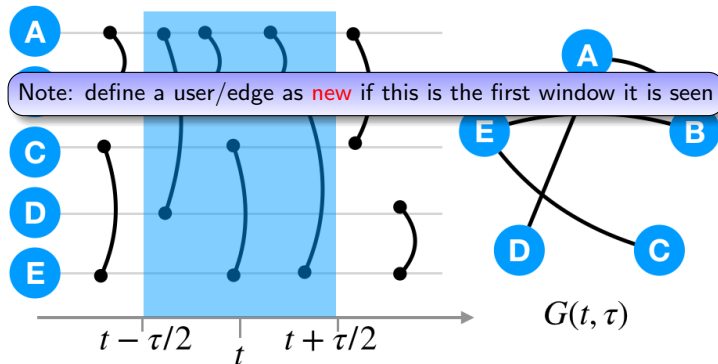
The graph  $G(t, \tau)$  is defined by the set of all edges  $i, j$  where  $i$  and  $j$  interact at a time  $T$  such that  $t - \tau/2 \leq T \leq t + \tau/2$ .



# Temporal graphs – interaction graphs

## Interaction graph for time $t$ and a window length $\tau$

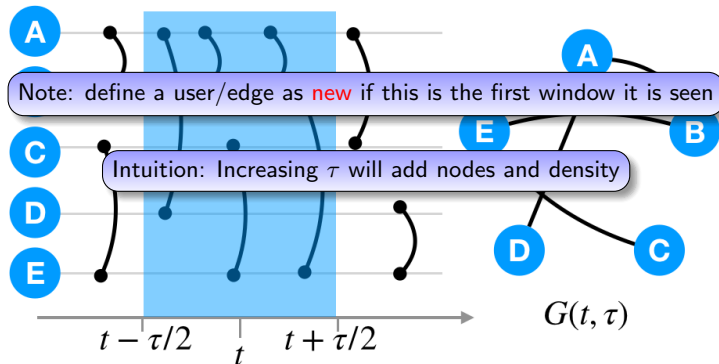
The graph  $G(t, \tau)$  is defined by the set of all edges  $i, j$  where  $i$  and  $j$  interact at a time  $T$  such that  $t - \tau/2 \leq T \leq t + \tau/2$ .



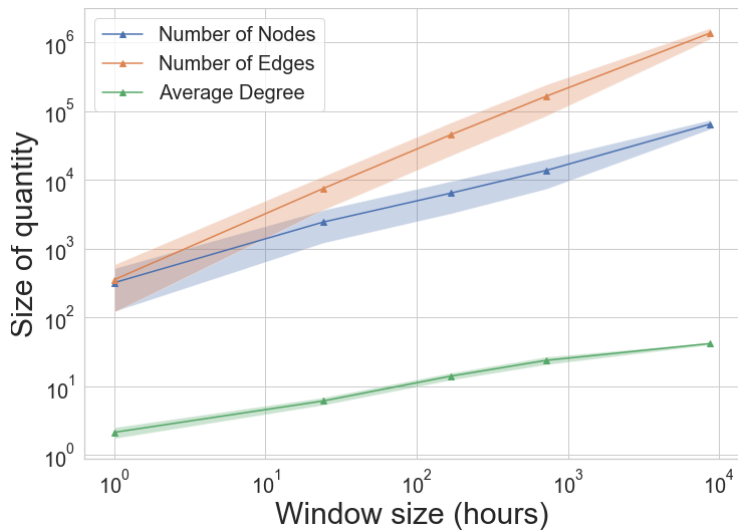
# Temporal graphs – interaction graphs

## Interaction graph for time $t$ and a window length $\tau$

The graph  $G(t, \tau)$  is defined by the set of all edges  $i, j$  where  $i$  and  $j$  interact at a time  $T$  such that  $t - \tau/2 \leq T \leq t + \tau/2$ .



# Checking our intuition



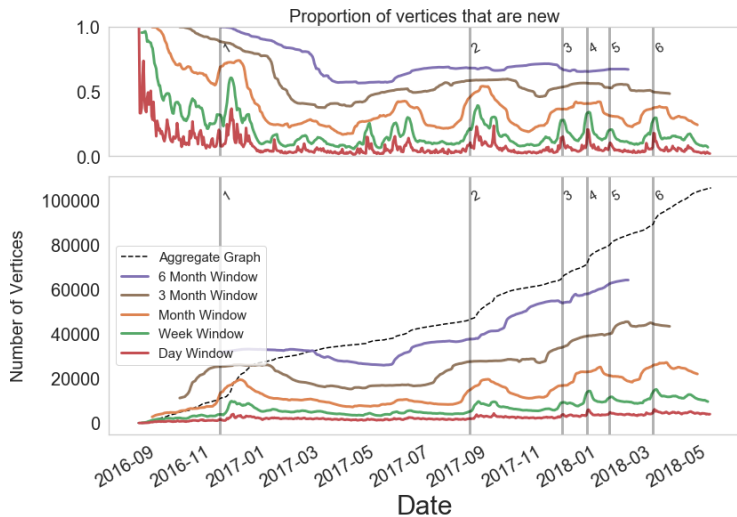
# Some research questions for gab data

## What simple questions can we ask of the data

Remember our focus is **structure** not **content**. We are not (we cheat a little here at one point) digging into the content of messages.

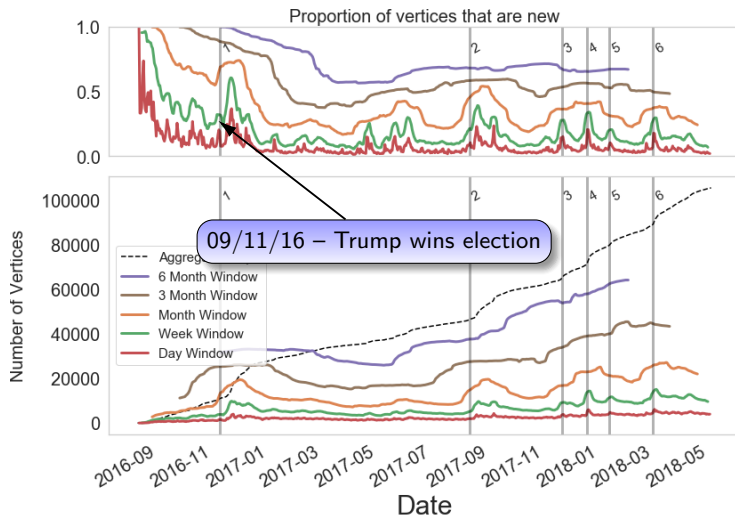
- Is gab growing, what drives the growth?
- Is gab a “social” network (friends interacting)?
- Is gab a “community” (in a loose sense)?
- Is gab controlled by an “elite”?

# What drives growth on gab?

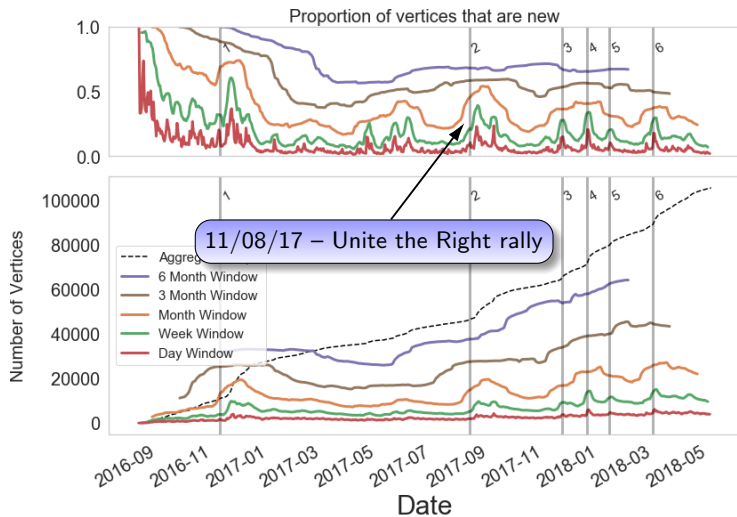




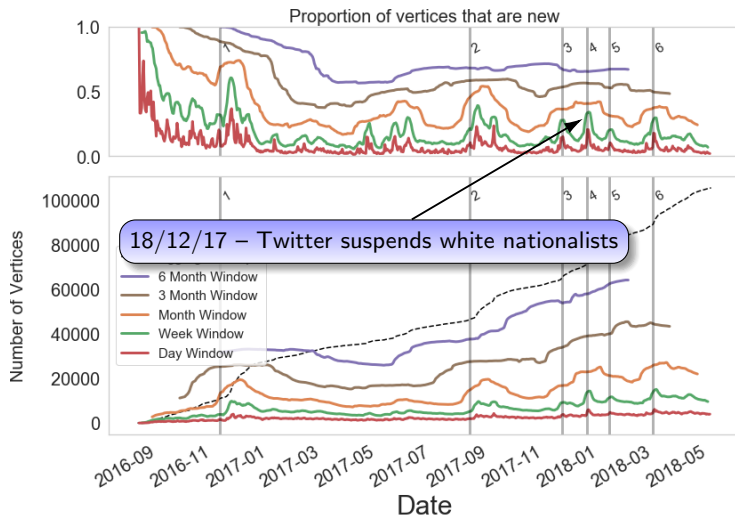
# What drives growth on gab?



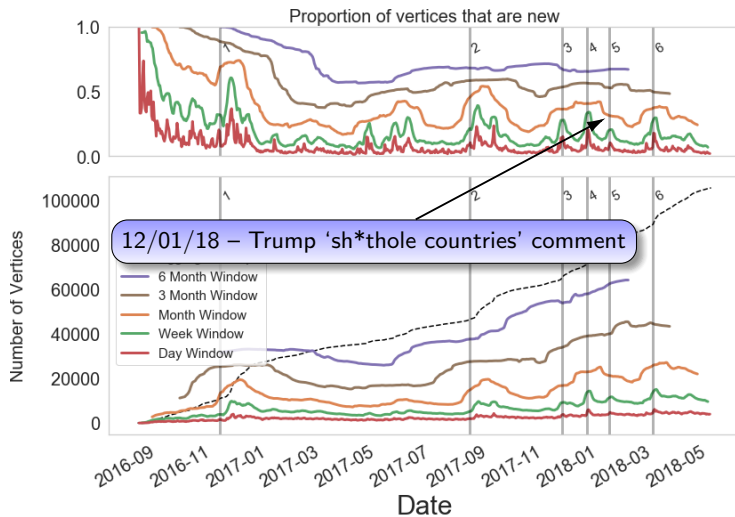
# What drives growth on gab?



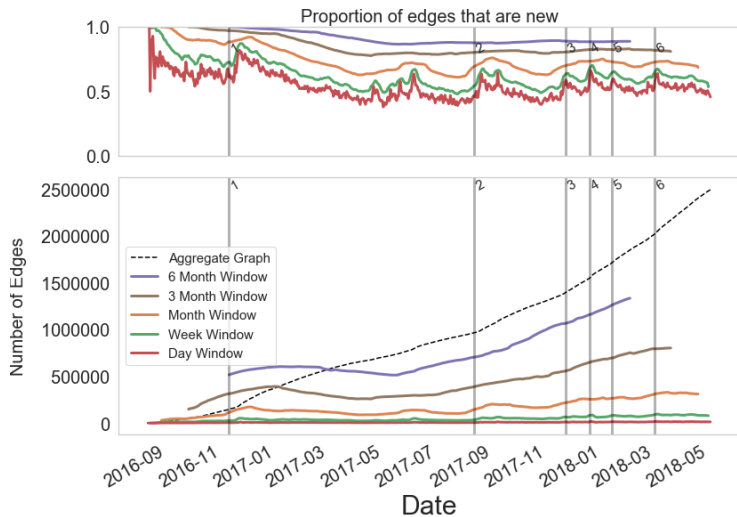
# What drives growth on Gab?



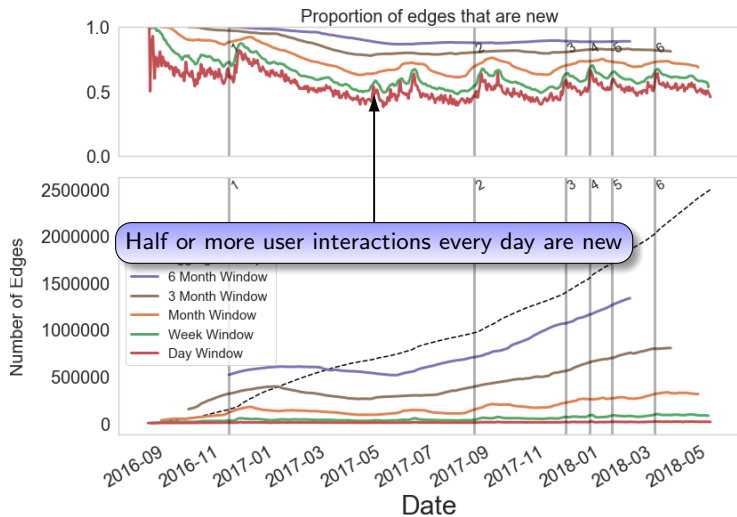
# What drives growth on gab?



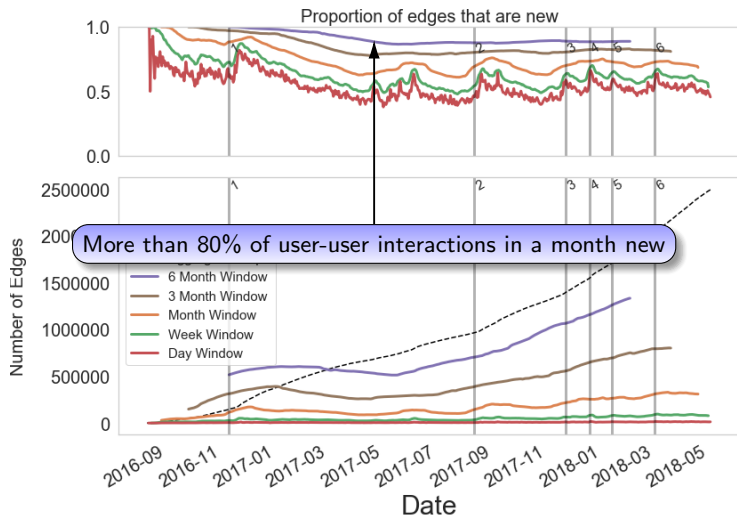
# Is gab a “social” network?



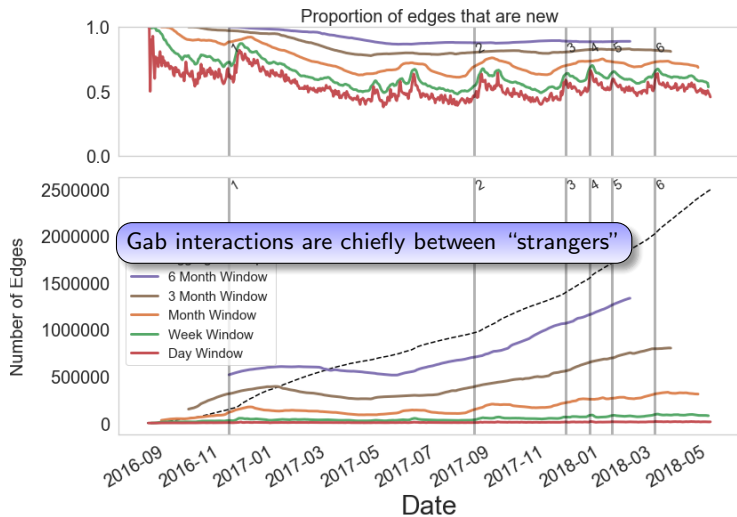
# Is gab a “social” network?



# Is gab a “social” network?



# Is gab a “social” network?





# Is gab a community? Largest Connected Component

## Definition: Connected component

A **connected component** is a sub graph of a graph within which all nodes can trace a path to each other. The largest connected component (LCC) is the one with the most nodes.

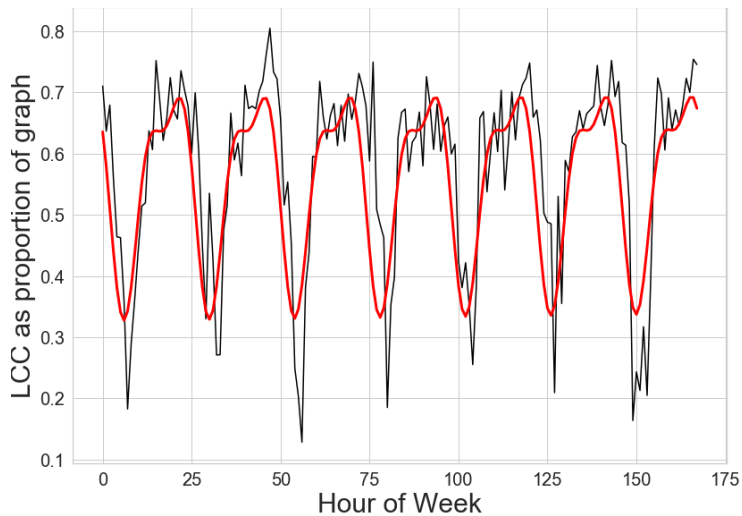
# Is gab a community? Largest Connected Component

## Definition: Connected component

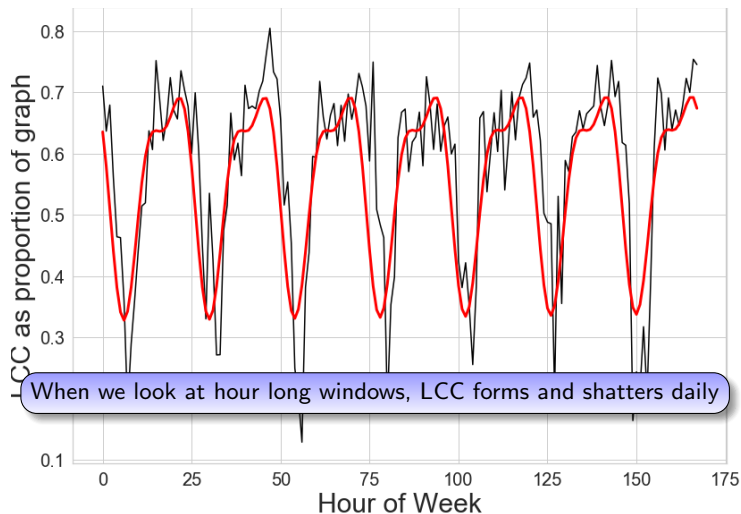
A **connected component** is a sub graph of a graph within which all nodes can trace a path to each other. The largest connected component (LCC) is the one with the most nodes.

- LCC is size of the largest “community” (in loosest sense).
- Remember: only count people active within the window.
- Expectation: in a “large” window most users within the LCC.
- But what happens as we look at smaller and smaller windows?

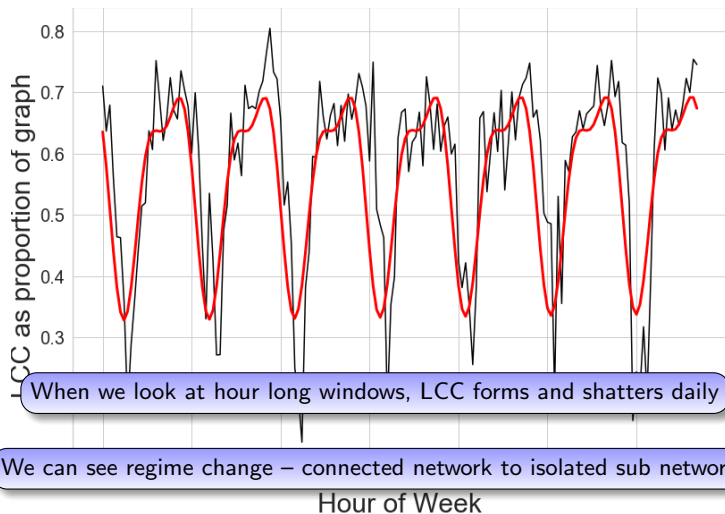
# Is gab a community? LCC (hour window)



# Is gab a community? LCC (hour window)



# Is gab a community? LCC (hour window)



# Is gab controlled by an “elite”?

- One measurement: Are the same people always most “talked about”?
- Proxy measurement: Node degree is the number of users who engaged with that user.
- Are highest degree nodes same between windows  $W_A$  and  $W_B$ ?

# Is gab controlled by an “elite”?

- One measurement: Are the same people always most “talked about”?
- Proxy measurement: Node degree is the number of users who engaged with that user.
- Are highest degree nodes same between windows  $W_A$  and  $W_B$ ?

## Jaccard Similarity (for top $N$ users)

Let  $A, B$  be set of top  $N$  users in windows  $W_A, W_B$ .

$$J(A, B) = \frac{A \cap B}{A \cup B}.$$

## Refresh rate top $N$ users, windows $W_A, W_B$

Refresh rate  $R = 1 - J(A, B)$

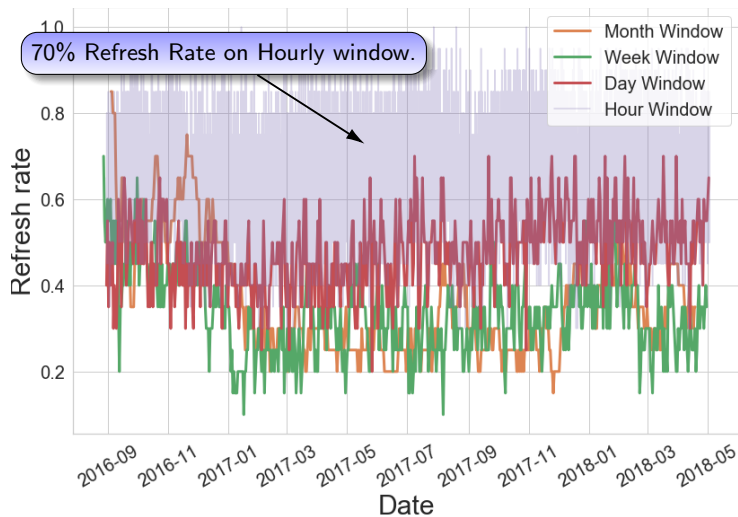
$0 \rightarrow W_A$  same users as  $W_B$  and  $1 \rightarrow$  no users the same.

# Is gab controlled by an “elite”?

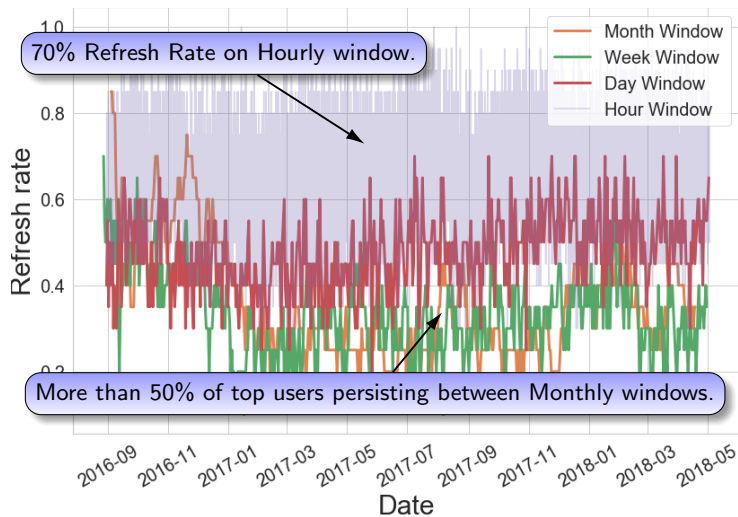




# Is gab controlled by an “elite”?



# Is gab controlled by an “elite”?



# Conclusions (about gab)

- Is gab growing? What drives this?  
Gab is evolving with rapid growths witnessed at small windows, driven by community specific events.

# Conclusions (about gab)

- Is gab growing? What drives this?  
Gab is evolving with rapid growths witnessed at small windows, driven by community specific events.
- Gab is not a “social” network – interactions between “strangers” not friends.

# Conclusions (about gab)

- Is gab growing? What drives this?  
Gab is evolving with rapid growths witnessed at small windows, driven by community specific events.
- Gab is not a “social” network – interactions between “strangers” not friends.
- The interactions within Gab do not always form a “connected” community. We observed a daily shattering of the LCC and diurnal change of regime never observed before.

# Conclusions (about gab)

- Is gab growing? What drives this?  
Gab is evolving with rapid growths witnessed at small windows, driven by community specific events.
- Gab is not a “social” network – interactions between “strangers” not friends.
- The interactions within Gab do not always form a “connected” community. We observed a daily shattering of the LCC and diurnal change of regime never observed before.
- Are a cadre of elite users controlling users’ attention?  
Not clear: At longer timescales there is a group who receives a lot of attention. At only one timescale you will get a misleading answer.

## Conclusions (about Raphtory and temporal networks)

- Temporal networks provide a rich array of techniques that can get more out of your network data.
  - Window based analysis provides many levels of insight.

## Conclusions (about Raptory and temporal networks)

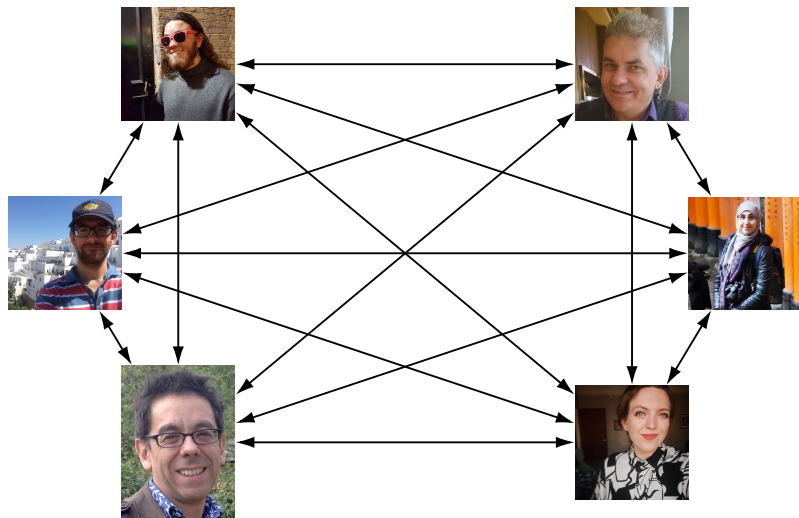
- Temporal networks provide a rich array of techniques that can get more out of your network data.
  - Window based analysis provides many levels of insight.
- The Raptory tool is a great way to look at temporal graph data.



# Conclusions (about Raptory and temporal networks)

- Temporal networks provide a rich array of techniques that can get more out of your network data.
  - Window based analysis provides many levels of insight.
- The Raptory tool is a great way to look at temporal graph data.
  - Urban analytics – intervention in social networks.
  - Bitcoin/blockchain – tracking “dark markets”.
  - Semantic networks – changing word meanings.
  - Other social networks – compare and learn more.

# Our Raphorty social network (a small subgraph)



# Our Raphtory social network (a small subgraph)

